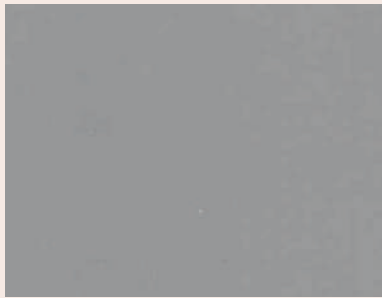


## ACRYLIC SURFACE PANELS BY CANTAWOOD



**CANTAWOOD** Acrylic board offers the Highest Quality in high gloss components. The high gloss acrylic surface is Laminated onto Super Refined HDFMR using PUR Glue in a clean Environment to Ensure a Mirror Like Reflective Quality.

## HIGH GLOSS COLOURS :



MINK BROWN MBHG - A001



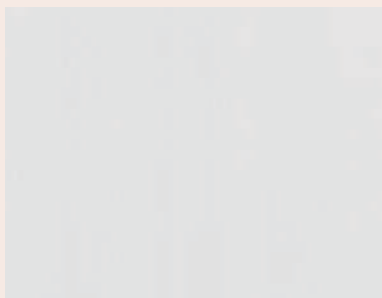
ELECTRIC YELLOW EYHG - A002



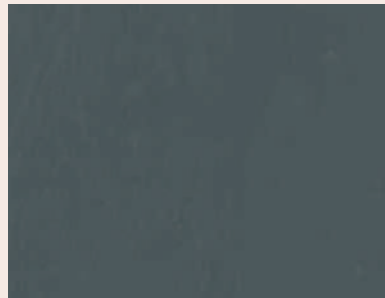
GLAZY RED GRHG A003



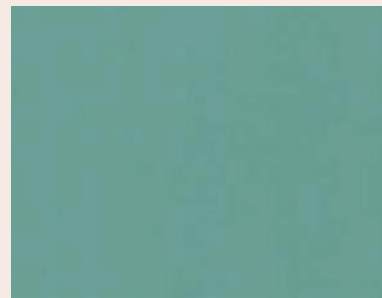
WARM WHITE WWHG-A007



VOCAL WHITE VWHG A008



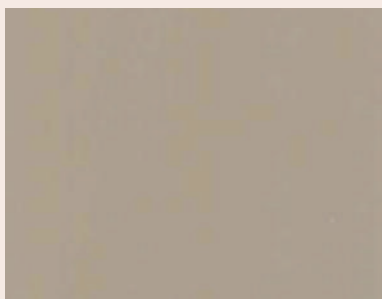
DEEP SKY GREY DSGHG A009



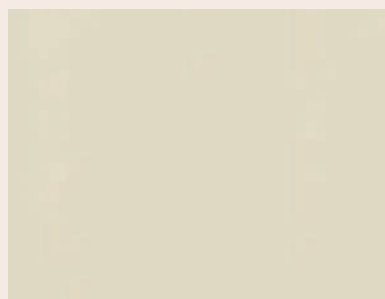
HOOKE'S GREEN HGHG-A010



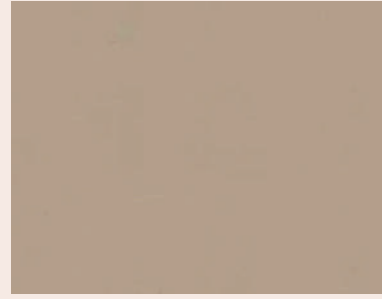
DURBY WALNUT DWHG A011



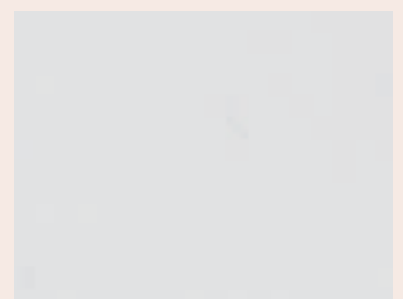
SAND BROWN SBHG A012



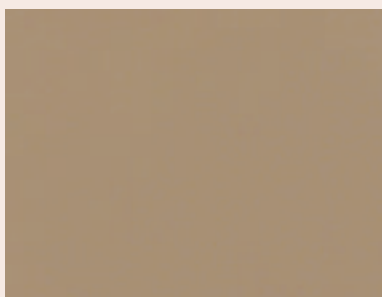
SILKY CREAM SCHG A013



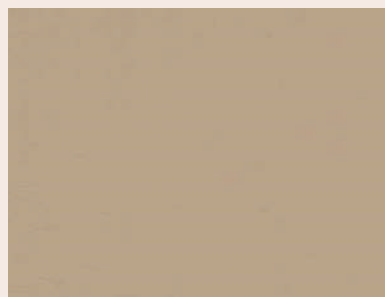
CAPPUCCINO CHG-A014



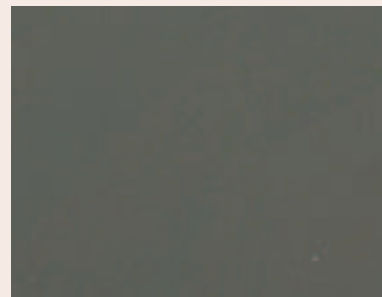
ANTIQUÉ WHITE AWHG-A015



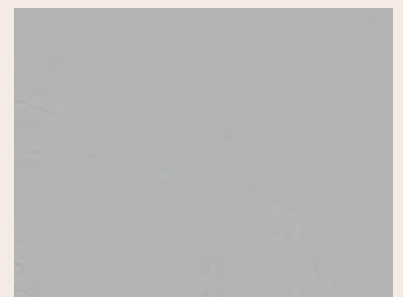
TAWNY BROWN TBHG-A016



KHAKHI BROWN KBHG-A017

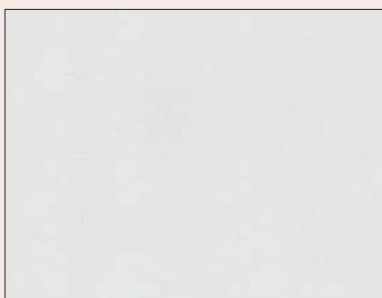


ASH GREY AGHG - A018

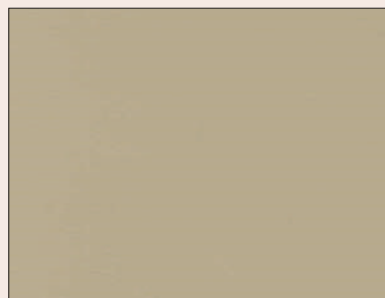


LIGHT MINK LMHG-A019

## 3D COLOURS:



SNICKER WHITE SW-3D001

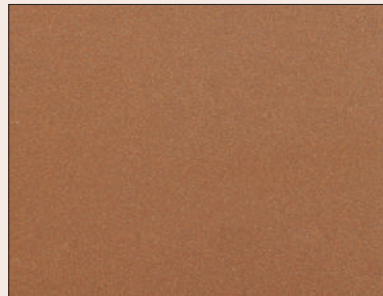


DESSERT SAND DS-3D002

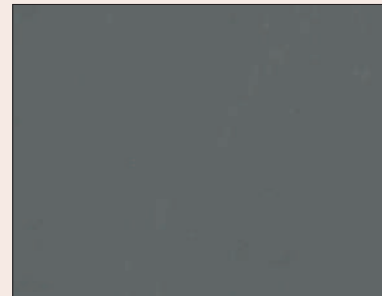
## METALLIC COLOURS:



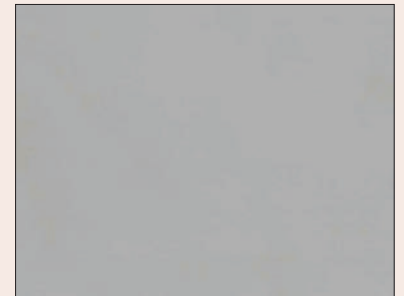
CANTA STUN-CSHMT-A006



SABLE BROWN SBMT-A020



TABBY GREY TGHM A004



MEDIUM GREY MGHM A005

\*Colours Chart is only for Idea Actual Colours may vary.

## MATT COLOURS:



## **DESCRIPTION**

|                       |   |
|-----------------------|---|
| <b>Size</b>           | 1220*2440 MM Thickness 17MM, 19MM.                            |
| <b>Base material</b>  | HDFMR Green Core.   |
| <b>Hardness</b>       | 4H.   |
| <b>Surface finish</b> | Acrylic sheet (Thickness from 1mm to 2mm).                    |
| <b>Back finish</b>    | White Or Matching Color High Quality Melamine, ABS HPL Sheet. |
| <b>Glue</b>           | KLEIBERIT Pur German Hotmelt Glue.                            |
| <b>Colors</b>         | Solid colors ,Shining colors ,Wood Grain Colors, 3D Colors.   |

## **ADVANTAGES OF ACRYLIC SURFACE PANELS**

- ★ Flatness : Processing on Non-Dust German Pressing Plant Managed by Highly Skilled Team.
- ★ UV Resistance : Surface with UV Resistant Treatment to Avoid Colour Fading.
- ★ Mirror Like Reflective Quality : Surface Gloss Level More than 95%.
- ★ Scratch Resistant: The hardness of Acrylic Sheet is around 4H, which makes it Scratch Resistant.
- ★ Heat & Humidity Resistant.
- ★ No Waviness and Bubbles on Surface which Makes it Different From other Companies' Panels.
- ★ Protection Film to Avoid Damage During Transportation or Installation.
- ★ Base Material is HDFMR which is Water Resistant and Termite Resistant.
- ★ Matching Edge Band Tape is Available So, No Need to Find Tape in the Market.



## APPLICATIONS : KITCHEN



## WARDROBE



## BATHROOM VANITIES



## L.E.D UNITS



# CANTAWOOD INDUSTRIES

AN ISO : 9001 : 2015 CERTIFIED COMPANY

Plot No. 70-A, 70-B, New Rishi Nagar, Vill. Gaunspur, Hambran, Ludhiana-141010, Punjab

M. : 9988995276, 99112-51972

✉ sales@cantawood.com, info@cantawood.com 🌐 www.cantawood.com 📘 www.facebook.com/cantawood